

Technical Information

No. 2 · page 1

Installation of KATEC-Allmetal-standard-elements

Metal supported catalysts must be carefully mounted inside of any combustion duct in order to prevent bypass of unoxidized hydrocarbons.

Stabilized metal catalysts are available in self contained stainless steel frames. Two types of frame construction are used: The self gasketing type with a gasket mounted to the catalyst frame proper and a normal type where the gasket must be applied to the hold-down frame. Dimensions of frame type G (self-gasketing) and the normal type are shown in the attached table.

The catalyst frame is mounted on a hold-down frame made from standard angle structures. This hold-down frame must be welded gas-tight to the housing wall and made completely level.

Catalyst Elements with normal gasket

This arrangement has been used successfully for years with metal supported catalysts. The dimensions and mounting arrangements are shown on page 2 and 4 (attached).

The gasket is mounted on the catalyst hold-down frame. Catalyst elements must be carefully mounted on this frame to assure gastight installation. This type of gasket should be changed after a certain longer operation period. Although this arrangement is more difficult, it has the advantage that smaller duct openings (one inch less per element) are required.

Catalyst Elements Type G

Dimensions and frame construction are shown in page 3 (attached). Recommended installation dimensions and arrangement are shown on page 5.

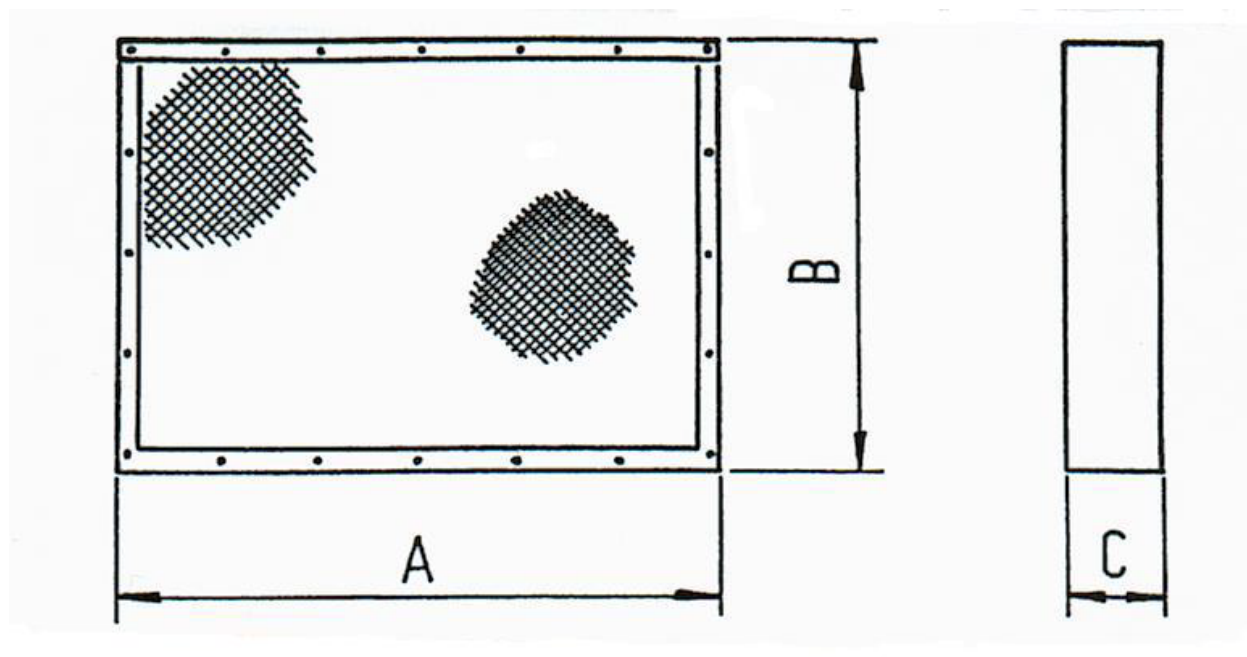
The special gasket is pressed into a tongue on the outside of the catalyst frame. This form allows easy installation and assures gas tight mounting whenever the recommended hold-down dimensions are maintained.

In conclusion it can be stated that both mounting arrangements are satisfactory. It is most important that the selected gasket material is made of a high temperature mixture. This assures the gasket density even after several dismountings of the elements.

Technical Information

No. 2 · page 2

Dimensions – normal element type

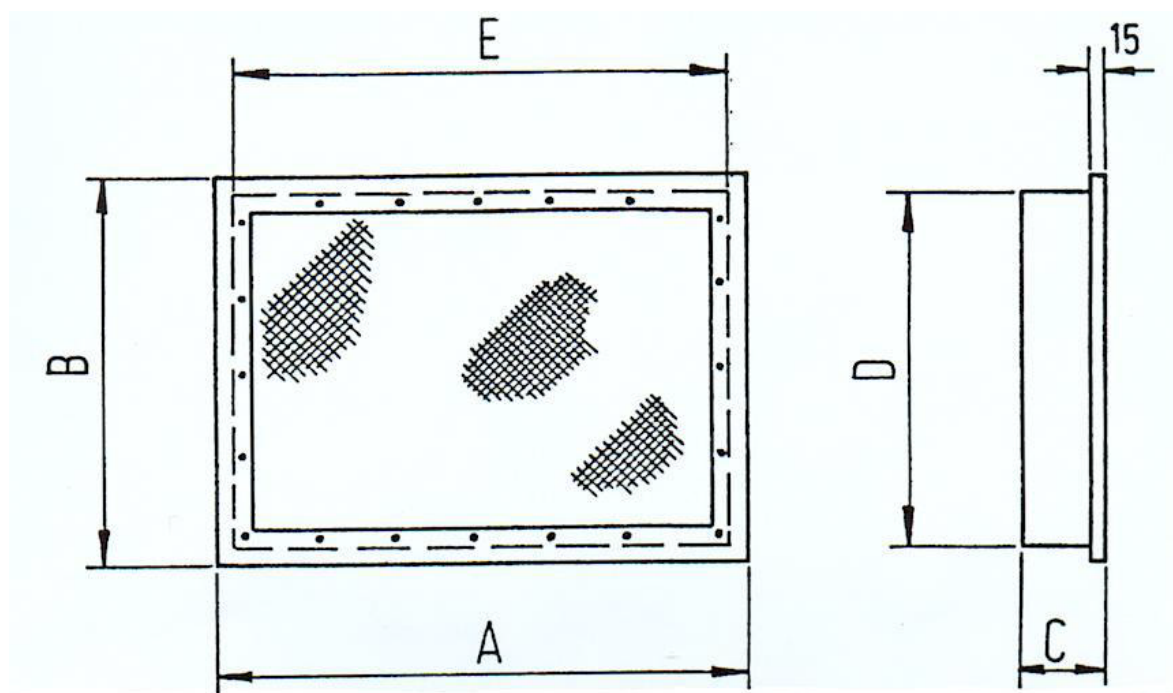


TYPE	A	B	C
1 – 2	610	457	67
1 – 3	610	457	99
1 – 4	610	457	131
2 – 2	610	305	67
2 – 3	610	305	99
2 – 4	610	305	131
3 – 2	457	305	67
3 – 3	457	305	99
3 – 4	457	305	131
4 – 2	280	186	67
4 – 3	280	186	99
4 – 4	280	186	131

Technical Information

No. 2 · page 3

Dimensions – self gasketing type „G“

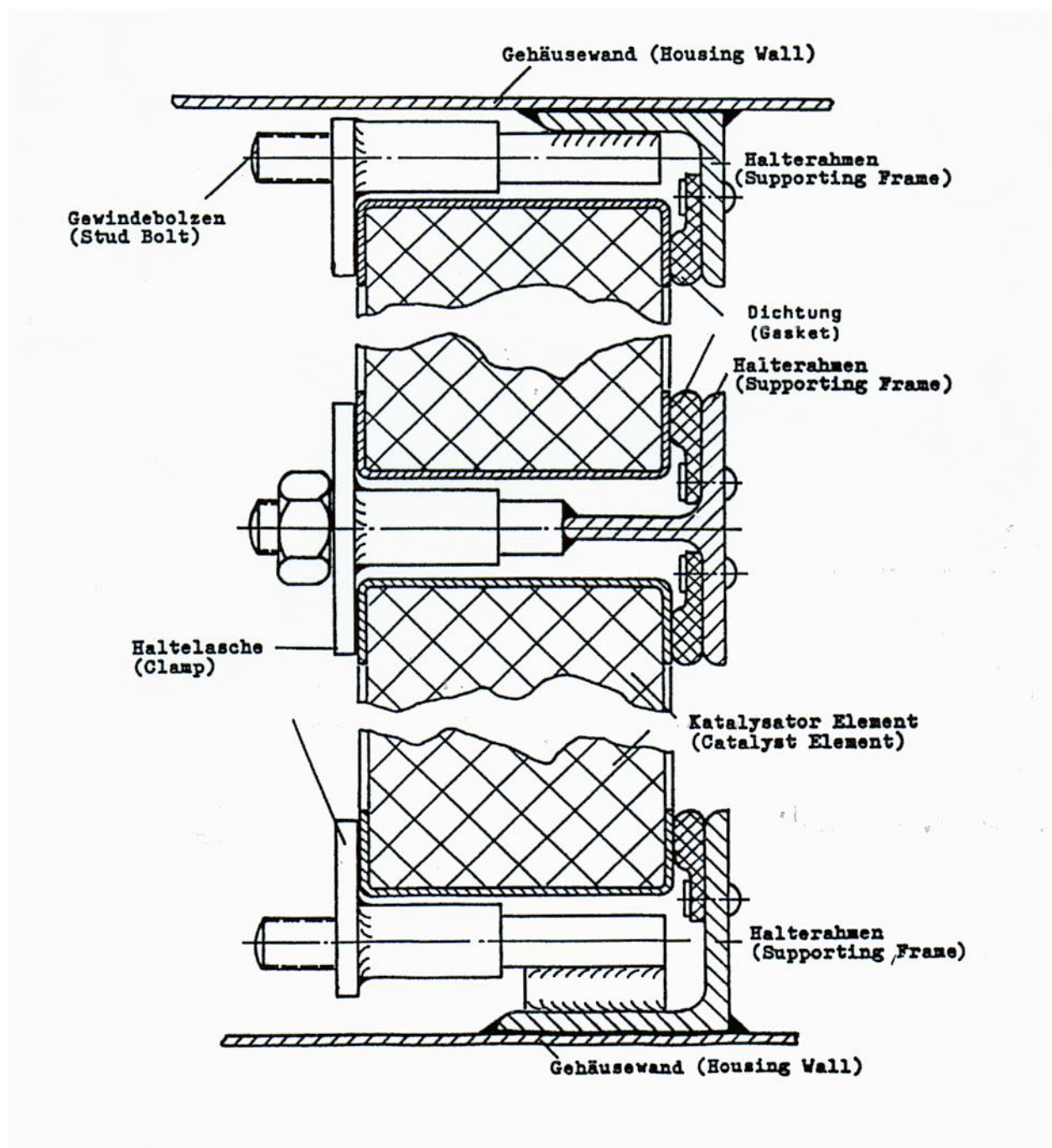


TYPE	A	B	C	D	E
1 – 2	636	483	67	457	610
1 – 3	636	483	99	457	610
1 – 4	636	483	131	457	610
2 – 2	636	331	67	305	610
2 – 3	636	331	99	305	610
2 – 4	636	331	131	305	610
3 – 2	483	331	67	305	457
3 – 3	483	331	99	305	457
3 – 4	483	331	131	305	457
4 – 2	306	212	67	186	280
4 – 3	306	212	99	186	280
4 – 4	306	212	131	186	280

Technical Information

No. 2 · page 4

Installation recommendation – normal type



Technical Information

No. 2 · page 5

Installation recommendation – self gasketing "G"

